



Integrated Data Services, Inc.

Modules for DocuWare

Auto Close

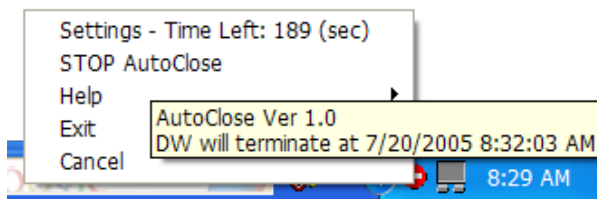
Efficiently Manage DocuWare Client Licences

The IDS AutoClose module runs as a background process that automatically closes DocuWare sessions after a pre-set idle timeout. This feature allows for more efficient use of DocuWare licenses.

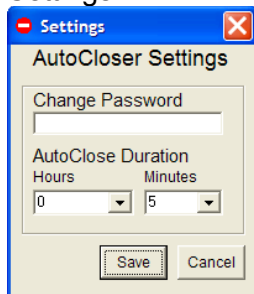
Functionality

Many companies have DocuWare users with 'Idle' DocuWare sessions, preventing other users from logging on to DocuWare, when license(s) limit has been exceeded. This tool helps to free up 'Idle' DocuWare application licenses.

IDS AutoClose Tray Icon



Settings



Standard features that AutoClose has:

Standard Features

- Settings – To set password and AutoClose idle time duration
- Automatically closes DocuWare when Idle time period expires
- Auto starts at Windows startup
- Help reference

Other IDS / DocuWare products include:

Blank Page Delete – Automatically removes blank pages from duplex scanned documents

Cover Page - Read bar codes into your DocuWare System

DocDistributor – Bulk Distribute your documents to a variety of destinations w/PDF conversion ability

DocRetention – Automate your document retention policies

QueryDoc – Search a DocuWare cabinet, called from another application

Integrated Data Services, Inc.
700 Veterans Memorial Highway Suite LL035
Hauppauge, NY 11788
PHONE (631) 265-7162
FAX (631) 366-4317