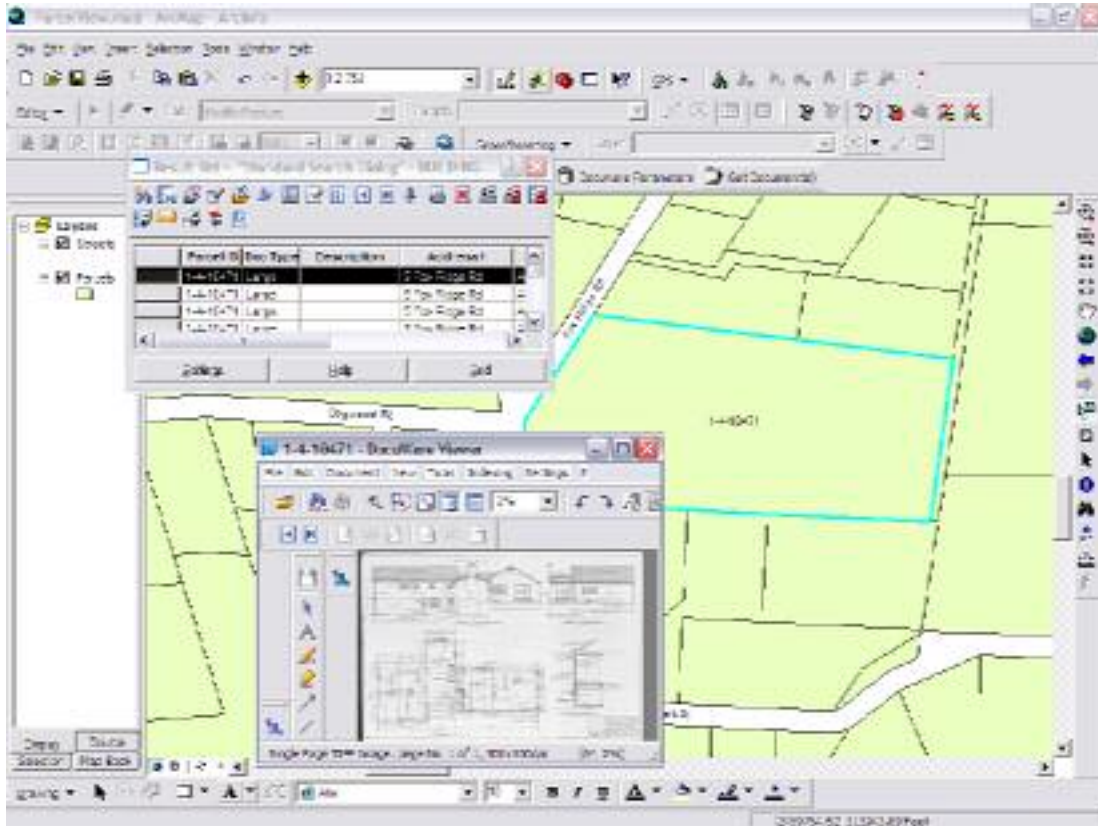


ESRI ArcMap Integration

This integration was prepared for a local town government to demonstrate the ease of integration between their parcel mapping software and a DocuWare file cabinet holding building department documents. Documents that have a geographic component are easily linked using a simple ArcMap VBScript program together with the IDS QueryDoc module. The parcel(s) are queried using an ArcMap query selection tool or manually located and highlighted. After the parcel or parcels are selected the document result list is displayed by clicking on the "Get Document(s)" button.



The "DocuWare Parameters" button allows easy configuration of the DocuWare file cabinet and the linking fields as shown below.

